



UNI

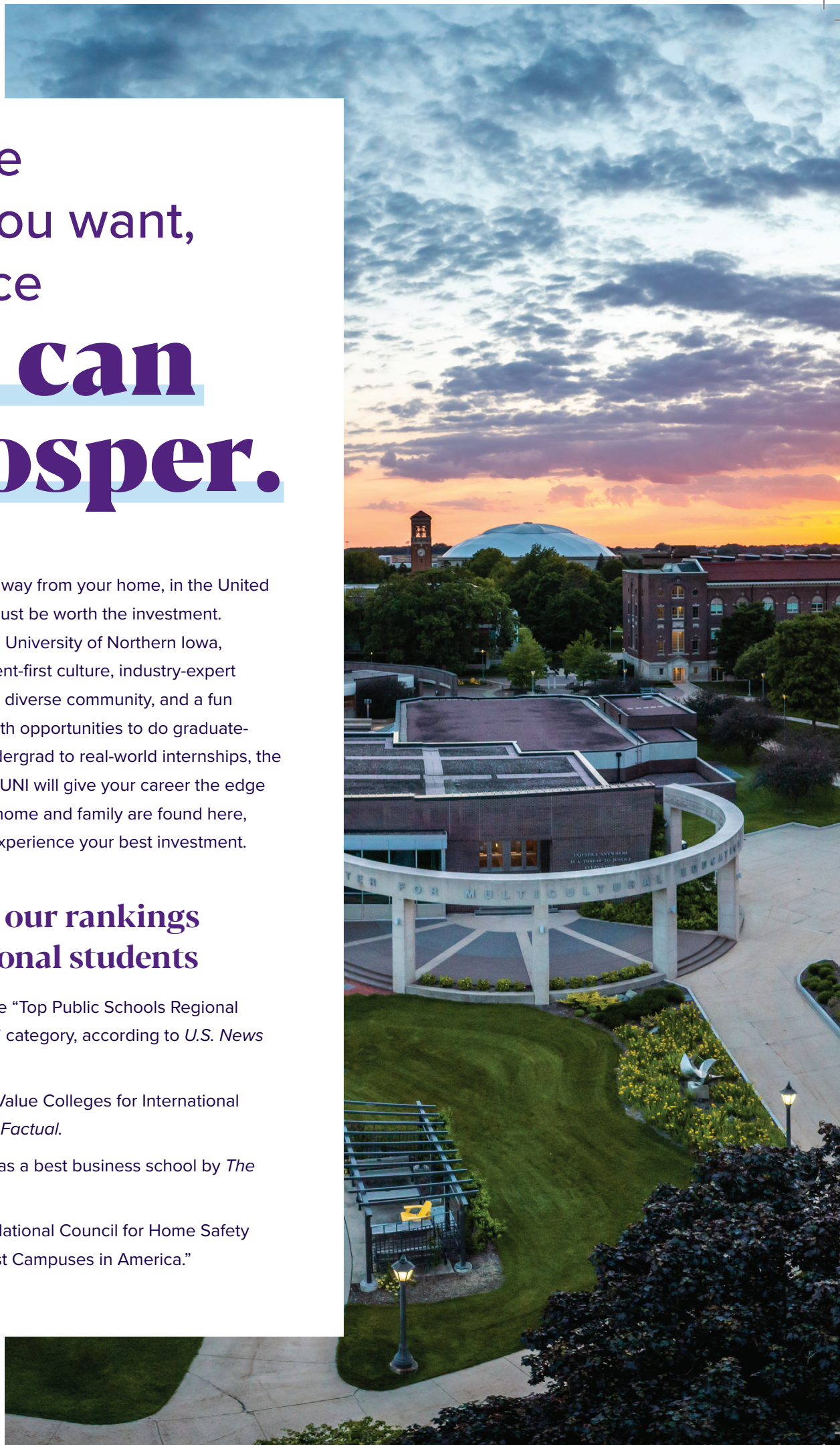
University of
Northern Iowa.

Seek the future you want, at a place **you can prosper.**

Pursuing an education away from your home, in the United States, is a big leap. It must be worth the investment. Look no further than the University of Northern Iowa, where you'll find a student-first culture, industry-expert educators, a supportive, diverse community, and a fun campus atmosphere. With opportunities to do graduate-level research as an undergrad to real-world internships, the learning experiences at UNI will give your career the edge it deserves. A sense of home and family are found here, making the entire UNI experience your best investment.

Just a few of our rankings for international students

- + Ranked second in the "Top Public Schools Regional University (Midwest)" category, according to *U.S. News & World Report*.
- + Ranked 17th in Best Value Colleges for International Students by *College Factual*.
- + Consistently ranked as a best business school by *The Princeton Review*.®
- + Ranked among the National Council for Home Safety and Security's "Safest Campuses in America."





UNI at a glance

- + Located in Cedar Falls, Iowa
- + Founded in 1876
- + Current enrollment: 8,500+
- + Students representing 60 countries
- + 160+ programs of study
- + Average class size is 26
- + 200+ student organizations and clubs
- + 96% of classes are taught by professors, not graduate students
- + Campus is 370 park-like hectares

UNDERGRADUATE MAJORS

160+ majors and minors is just a starting point.

It's fair to say that within every single UNI major, there exists a diverse range of career paths. By combining your personal areas of interest and ideas with advice from your professors and academic advisor, you'll be on your way to finding that "just right" major and future career.

Arts & Design

Art Education
Art History
Art Studio
Graphic Design
Interior Design
Music
Music: Jazz
Music: Performing Arts Management
Music: String Pedagogy
Music Composition/Theory
Music Education (Choral, Instrumental or Jazz)
Music History
Music Performance (Instrumental and/or Vocal)
Music Technology
Theatre Design & Production
Theatre for Youth & Communities
Theatre Performance

Business

Accounting **STEM**
Advertising & Digital Media
Business Analytics **STEM**
Business Teaching
Economics
Entrepreneurship*
Finance
Human Resources
International Business*
Management
Management Information Systems **STEM**
Marketing
Marketing Management

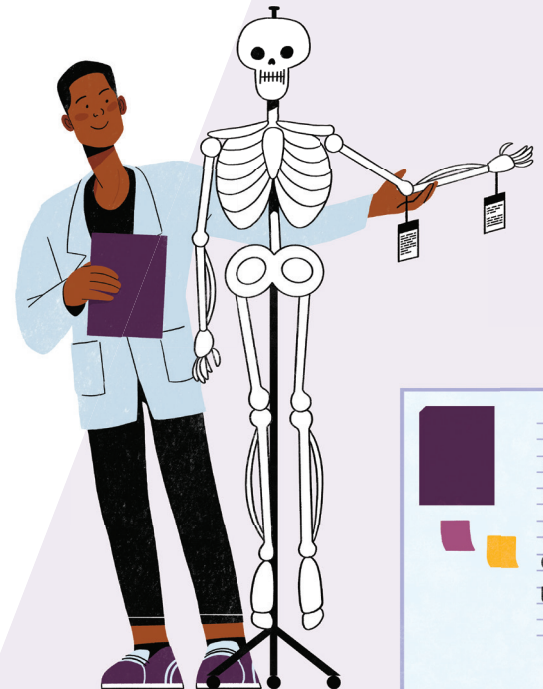
Organizational Leadership
Real Estate
Sales Management
Statistics & Actuarial Science
Supply Chain Management

Design Your Own

General Studies
Individual Studies
Liberal Studies

Education

Teaching: Art
Teaching: Biology **STEM**
Teaching: Business
Teaching: Chemistry **STEM**
Teaching: Communication/Theatre
Teaching: Early Childhood Education
Teaching: Earth Science **STEM**
Teaching: Elementary Education
Teaching: Elementary Science
Teaching: English
Teaching: Health Education*
Teaching: History
Teaching: Literacy Education*
Teaching: Mathematics
(High School) **STEM**
Teaching: Mathematics (K-8)
Teaching: Middle Level Dual Major
Teaching: Music
Teaching: Physical Education
Teaching: Physics **STEM**
Teaching: Science **STEM**
Teaching: Social Science
Teaching: Social Studies*



Teaching: Spanish
 Teaching: Special Education*
 Teaching: STEM* **STEM**
 Teaching: Technology & Engineering
 Teaching: TESOL (Teaching English to speakers of other languages)
 Teaching: TESOL/Spanish
 Coaching*
 Social & Emotional Learning*

Environmental

Air Quality*
 Astronomy*
 Earth Science **STEM**
 Ecology, Evolution & Organismal Biology **STEM**
 Environmental Resource Management
 Environmental Science **STEM**
 Geographic Information Science **STEM**
 Geography
 Geology*
 Hydrology*

Health, Human Sciences & Social Services

Athletic Training & Rehabilitation Studies
 Family Services
 Gerontology
 Kinesiology & Exercise Science
 Mental Health*
 Nursing
 Pre-audiology
 Pre-speech language pathology
 Psychology
 Public Health
 Recreation, Tourism & Nonprofit Leadership
 Sexuality, Women & Gender Studies*
 Social Work
 Sociology
 Sport Administration*
 Strength & Conditioning*

Languages, Communication & Cultural Studies

Anthropology
 Communication
 Creative Writing*
 Digital Media Journalism **STEM**
 Digital Media Leadership **STEM**
 Digital Media Production **STEM**
 English
 French 2+2
 History
 Interactive Digital Studies
 Philosophy
 Professional Writing*
 Public Relations
 Spanish
 Study of Religion

Politics & Justice

Criminology & Criminal Justice
 Ethics*
 International Affairs*
 Legal Studies*
 Political Communication
 Political Science



Explore all the possibilities.

+ majors.uni.edu

Public Administration
 Social Justice*

STEM

Automation Engineering Technology **STEM**
 Biochemistry **STEM**
 Biology **STEM**
 Biology: Biomedical **STEM**
 Chemistry **STEM**
 Computer Science **STEM**
 Construction Management **STEM**
 Data Science*
 Electrical Engineering Technology **STEM**
 Graphic Technology
 Manufacturing Engineering Technology **STEM**
 Mathematics **STEM**
 Networking & Systems Administration **STEM**
 Physics **STEM**
 Physics: Data Science **STEM**
 Physics/Engineering (dual degree)
 Statistics & Actuarial Science **STEM**
 Technology Management **STEM**

Pre-Professional Programs**

Chiropractic 3+1 (Biology)
 Medical Lab Sciences 3+1 (Biology)
 Nursing 3+1 (Biology)
 Pre-Chiropractic
 Pre-Dentistry
 Pre-Law
 Pre-Medical
 Pre-Occupational Therapy
 Pre-Optometry
 Pre-Pharmacy
 Pre-Physical Therapy
 Pre-Physician Assistant
 Pre-Radiography
 Pre-Sonography
 Pre-Veterinary

*Minor: A minor is an optional specialized study area that may complement your declared major. Some majors can also be taken as a minor.

**Pre-professional programs are not specific academic programs, but rather suggested programs of study that prepare students to apply for professional school upon completing their undergraduate degree. Students interested in pre-professional programs can choose a major in any area.

STEM

Programs designated as STEM. These programs allow international students on/with F-1 visas to qualify for up to three years of Optional Practical Training (OPT) after graduation. OPT is an opportunity to work in the United States within a job related to your field of study – gaining experience and connections for future opportunities. Programs without STEM designation only have one year of OPT offered.



GRADUATE PROGRAMS AND DEGREES

Give your career the
**edge it
 deserves.**



Graduate Majors

Master of Arts/Master of Sciences	TOEFL	IELTS	Additional Requirements
Athletic Training (M.A.T.R)	79	6.5	Statement, Resume/CV, 3 LOR, Statement of Experience
Biology (M.S.)	79	6.5	Statement, 3 LOR
Communication & Media (M.A.)	100	7	Statement, Writing Sample, 3 LOR
Community Health & Recreation (M.A.)	79	6.5	Statement, 2 LOR, Resume/CV
Counseling (M.A.)	79	6.5	Statement, Writing Sample, 3 LOR, Resume/CV
Educational Psychology (M.A.E.)	79	6.5	Statement, Writing Sample, 3 LOR, Resume/CV
English (M.A.)	100	7	Statement, Writing Sample, 2 LOR
Geography (M.A.)	79	6.5	Statement, 2 LOR
History (M.A.)	79	6.5	Statement, Writing Sample, 2 LOR
Kinesiology & Sports Performance (M.A.)	79	6.5	Statement, 2 LOR, Resume/CV
Mathematics (M.A.)	79	6.5	Statement
Post-Secondary Ed: Student Affairs (M.A.)	79	6.5	Statement, 3 LOR, Resume/CV
Psychology (M.A.)	79	6.5	Statement, 3 LOR, Resume/CV
Speech Language Pathology (M.A.)	90	6.5	Statement, Clinical Observation Hours, Resume/CV, 3 LOR
Teaching English to Speakers of Other Languages - TESOL (M.A.)	100	7	Statement, 2 LOR
TESOL/Spanish (M.A.)	100	7	Statement in Spanish, 2 LOR
Technology (M.S.)	79	6.5	Statement, 3 LOR, Resume/CV
Women's and Gender Studies (M.A.)	79	6.5	Statement, Writing Sample, 2 LOR
Master of Accounting (MACC)	100	7	GMAT Minimum Score 500
Master of Business Administration (M.B.A.)	79	6.5	Resume/CV
Master of Interdisciplinary Studies	79	6.5	Statement, 2 LOR, Resume/CV
Master of Music (M.M./M.A.)	79	6.5	Statement, 2 LOR, Resume/CV
Master of Social Work (M.S.W.)	79	6.5	Statement, 3 LOR, Resume/CV, Bachelor in Social Work

These online programs are offered: Art Education (M.A.), Early Childhood Education (M.A.E.), Elementary Education (M.A.E.), Learning Technologies and Instructional Design (M.A.), Literacy Education (M.A.E.), Philanthropy & Nonprofit Development (M.A.), Physical Education: Pedagogy (M.A.), Principalship (M.A.E.), Public Policy (M.P.P.), School Library Studies (M.A.), Social Work - Trauma Informed Practice Specialization (M.S.W.), Allied Health, Recreation & Community Services (Ed.D.), Curriculum & Instruction (Ed.D.), Education: Leadership & Special Education (Ed.D.). International students cannot secure a U.S. visa for a program offered primarily or entirely online but can enroll if plan to take while residing in their home country.

For more detailed and up-to-date information, visit intladm.uni.edu/graduate-majors.





Graduate Program Highlights

- + High pass-rates on professional examinations
- + Opportunities for internships
- + Annual Three-Minute Thesis (3MT) Competition for students to showcase their research
- + 98% of students found success after graduation
- + International students have been recognized, including UNI's "Outstanding Master's Thesis Award" and "Graduate Assistant First Award".

Reach and grab **opportunities everywhere.**

UNI's immersive education combines critical coursework with real, practical field work so you'll have access to great industry relationships for internships, work experiences and future career opportunities. You'll graduate UNI well-rounded, well-educated and well-prepared for the real world with a resume that gets noticed.

Undergraduate Highlights

- + Accounting, MIS and Business Analytics programs have STEM designation from the U.S. government which allows international students up to three years of work experience after graduation.
- + Our John Pappajohn Entrepreneurial Center, which includes the R. J. McElroy Student Business Incubator, is housed right on campus and is a centralized hub for entrepreneurial resources, programs and collaboration.
- + UNI is the first university in Iowa to use SynDavers, which are synthetic human cadavers, and recently received the new Generation 3 SynDavers.
- + UNI's Biology Department has been ranked one of the Midwest's Best by *U.S. News and World Report*.

96%

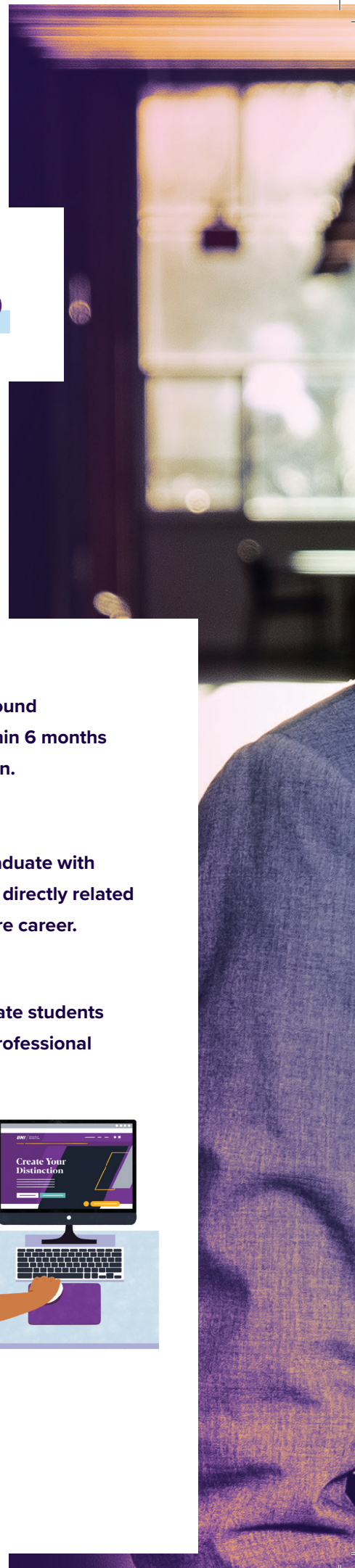
graduates found success within 6 months of graduation.

94%

students graduate with experiences directly related to their future career.

33%

undergraduate students engage in professional research.





Alumni **Russel Karim**

Alumni Russel Karim left his home country of Bangladesh for UNI to study computer science. It was while he was here that he found his greatest passion – entrepreneurship. Through UNI’s John Papajohn Entrepreneurial Center on campus, Russel was able to start his first business. He hasn’t looked back since and currently is the CEO and founder of Dhakai, an online marketplace that helps match brands with sustainable and ethical manufacturers. He has even represented the Iowa startup community on a national scale with Dhakai being recognized in Times Square in New York City. UNI is proud to call Russel a Panther alumni!

INTERNATIONAL STUDENT PROGRAMS

Support and resources at every turn.

UNI's campus is filled with people who are ready to support you. Whether you need guidance on choosing a major, assistance with finding a job on campus, help with your homework, or just someone to talk to, you won't have to look far.

- + International Engagement Office
- + Career Services
- + The Learning Center
- + Academic Advising Office
- + University Health Services





Nneoma

Home City: Enugu

Country: Nigeria

Major: Biology: Biomedical

Minor: Public Health

"My visa journey was stressful – but, with the help of the international admissions team, it was less overwhelming. They provided supportive letters to my embassy and assisted me with mock visa interviews. Their assistance helped me obtain my visa."

CAMPUS LIFE

What awaits you outside the classroom.

Sure, there's homework, projects and exams, but there's so much more – and an atmosphere of fun and inclusivity surrounds it all. Conquer the indoor rock-climbing wall at the Wellness Recreation Center, play club sports like soccer and basketball with friends from all over the world or join a student organization and start building some serious leadership skills. Your experience will be uniquely yours – so fill it with what makes you happy.

200+
organizations, clubs and
activities to get involved and
build your resume.

2 free tickets for shows at
UNI's Gallagher Bluedorn
Performing Arts Center.



17 Division I level sports teams to cheer
on! (free tickets to every home event!)





Live on campus, be near the action.

Living on campus is so much more than where you reside. It's about being at the center of campus life, surrounded by the best of everything. Bump into friends regularly. Enjoy easy access to award-winning dining, fun events and important campus services.

- + **10 housing options**, including traditional residence halls, apartment complexes and specific housing for graduate students.
- + **8 dining and retail locations** – we have the distinction of "Best College Food in Iowa" by Niche.



COST & AID

UNI was ranked a #17 Best Value for international students.

That's right! College Factual gave us this ranking (out of 1,204 schools) when it comes to "Best Colleges for the Money" for international students. It's really important to us that your UNI education is more than worth the cost. That's why we offer a variety of scholarships, graduate assistantships and campus employment for international students. We're focused on affordability so you can focus on making the most of your time here.

Cost of Attendance / 2023-24

	Undergraduate	Graduate
Tuition and Fees*	\$21,272	\$22,834
Books and Supplies	\$500	\$500
Health Insurance	\$2,328	\$2,328
Campus Housing and Meals	\$9,648	\$9,648
Personal and Recreational	\$1,500	\$1,500
Estimated Total (2 Semesters)	\$35,248	\$36,810

*The College of Business has a supplemental tuition for students who are a declared major in the College of Business and are classified as a junior, senior or graduate student.

Work on campus!

- + More than 3,000 campus jobs are available to students with student (F) visas or exchange visitor (J) visas. Learn more by visiting careerservices.uni.edu/campus-jobs.



Scholarships / 2023-24

Students can qualify for multiple scholarships, and scholarships are renewable and stackable.

Undergraduate Students

Automatic, Admission-Based Awards

The following scholarships are automatically awarded upon admission to qualifying students.

INTERNATIONAL SCHOLAR AWARD

For freshmen applicants only; only awarded one scholarship

+ **\$5,000/year** – 3.7+ GPA or 1130+ SAT

+ **\$3,000/year** – 3.5 GPA or 1020-1120 SAT

UNI TRANSFER SCHOLAR AWARD

For transfer applicants only

+ **\$1,000/first year** – 3.25+ GPA

UNI Scholarship Application Awards

To apply for the following scholarships, you must submit your UNI Scholarship Application at scholarshipapp.uni.edu. The priority deadline for most submissions is February 1.

INTERNATIONAL EXCEL AWARD

Awards based on academic background and scholarship essay

No specific deadline for this scholarship

+ **\$1,000–\$6,000/year**

PRESIDENTIAL SCHOLAR AWARD

For high-achieving students, includes participation in the Presidential Scholar Program

+ **\$4,000/year** – 3.95+ GPA

UNI BUSINESS SCHOLAR AWARD

For students planning to major in business

+ **Up to \$1,000/year** – 3.5+ GPA and 1200+ SAT

Graduate Students

ASSISTANTSHIPS

+ Offered by many departments on a competitive basis and can cover up to 90 percent of total costs.

+ The deadline to submit applications for the Fall 2024 semester is February 1, 2024

+ grad.uni.edu/assistantships



For more information,
visit online!

+ intladm.uni.edu/tuition-fees



ADMISSION REQUIREMENTS & APPLICATION PROCESS

Take the first step: apply to UNI.

1 Complete your UNI application.

(Common Application also accepted for undergraduates)

- + Visit intladm.uni.edu for country-specific requirements and access to the UNI Application.

2 Submit your educational transcripts.

- + You can apply with unofficial documents.

3 Submit your proof of English proficiency.

- + See sidebar for more details.





Mursal

Home City: Hyderabad

Home Country: Pakistan

Major: Business Analytics

“UNI has a wonderful environment for international students because everyone is welcomed here and gets the same opportunities that are offered to domestic students.”



Not a native English speaker?

You'll need to submit one proof of English proficiency. Options include:

- + TOEFL (Internet based) - Score of 79+
- + IELTS - Score of 6.0 for undergraduate and 6.5 graduate students
- + Duolingo - Score of 105+
- + SAT Evidence-Based Reading and Writing (EBRW) - Score of 480+
- + Other options at intladm.uni.edu

Conditional admission may be considered for undergraduate students with low or no English.

Some graduate programs require higher TOEFL or IELTS scores than those mentioned above, additional test scores, and/or supporting documents. Verify program-specific requirements at intladm.uni.edu/graduate-majors.

UNI's Culture and Intensive English Program (CIEP)

If you need to meet your English requirements or want additional English training, enroll in a CIEP session, which offers 15 classroom hours per week, for 8 weeks. CIEP follows an integrated approach to language learning so students can learn how to combine receptive skills (listening and reading) and productive skills (speaking and writing) across the curriculum.

Pathway Program

Conditionally-admitted students have the opportunity to be dual-enrolled in intensive English and academic coursework during their final levels of the program. This provides a seamless pathway for students to earn their degree at UNI.

Cost (per eight-week session)

Tuition per session is \$2,650.

To learn more and see available scholarship opportunities, visit ciep.uni.edu.

WHERE WE'RE LOCATED: CEDAR FALLS, IOWA

A safe, welcoming community to call home.

Cedar Falls is a charming small city with a bustling main street, diverse dining options and plenty of nature trails.

Additional highlights include:

- + A total population for the area (known as the Cedar Valley) of 250,000+ residents
- + Affordable cost of living – lower than the nation's average
- + Minimal traffic, a safe environment and all four seasons (yes, we have snow!).

Iowa is a great place to live. Come experience our welcoming nature and friendliness for yourself.



The Waterloo Regional Airport, about 10 minutes from campus by car, provides daily round-trip service to Chicago for connecting flights to more than 700 cities worldwide.



Most Livable College Towns – ranked #4 (out of 30), according to a 2021 study by SmartAsset.



Guidance givers, **that's us.**

From your first question to your first day on campus, UNI's international admissions team is here to help. You and your family are encouraged to connect with us through a virtual, one-on-one appointment. Discover that the personalized attention and support you'll receive at UNI starts now — with us.

International Admissions

+ 002 Gilchrist Hall
University of Northern Iowa
Cedar Falls, IA 50614-0018, USA




+ intladm.uni.edu

+ international.admissions@uni.edu

+ Phone: +1 (319) 273-2281

+ WhatsApp: +1 (319) 273-2363

Connect with us on social media:

-  [Uni.international](https://www.instagram.com/Uni.international)
-  [UNInternationalAdmissions](https://www.youtube.com/UNInternationalAdmissions)
-  [northerniowa](https://twitter.com/northerniowa)





**Take an
interactive
tour of campus!**
+ map.uni.edu



Alphabetical Order of Buildings
Building numbers begin at the north end of campus and continue to the south.

- | | | |
|--|---|--|
| 40 Admissions Welcome Center (AWC) | 52 Gallagher Bluebon Performance Arts Center (GBPAC) | 45 Rider Hall (RID) |
| 54 Applied Engineering Building (AEB) | 46 Gilchrist Hall (GIU) | 25 Rod Library (LIB) |
| 12 Bartlett Hall (BAR) | 42 Greenhouse (GNH) | 60 Roth Apartments (ROTH) |
| 20 Begeman Hall (PH) | 44 Hagemann Hall (HAG) | 38 Russell Hall (RSU) |
| 2 Bender Hall (BEN) | 19 Innovative Teaching and Technology Center (ITT) | 34 Sabin Hall (SAB) |
| 48 Biology Research Complex (BRC) | 59 Jennings Courts (JC7) | 18 Schindler Education Center (SEC) |
| 57 Business & Community Services (BCS) | 30 Kamerick Art Building (KAW) | 35 Seerley Hall (SRU) |
| 24 Campanile (CPL) | 21 Lang Hall (LNG) | 51 Shull Hall (SHU) |
| 5 Campbell Hall (CAM) | 47 Latham Hall (LAT) | 67 Storage Building '13 |
| 56 Center for Energy and Environmental Education (CEE) | 10 Lawther Hall (LAW) | 37 Stryer-Wood Theatre (SWT) |
| 27 Center for Multicultural Education (CME) | 8 Marshall Center School (MCS) | 9 Student Health Center (SHC) |
| 11 Commons (COM) | 26 Maucker Union (MAU) | 63 Talgrass Prairie Center (NPV) |
| 31 Communication Arts Center (CAC) | 43 McCollum Science Hall (MSH) | 3 Towers Center (TOW) |
| 39 Curris Business Building (CBB) | 29 McLeod Center (MCL) | 14 UNI Bookstore |
| 4 Dancer Hall (DAN) | 1 Noethen Hall (NRN) | 6 UNI Multinodal Transporation |
| 13 East Bartlett (SSC) | 49 Panther Village 1000 (CAC) | 17 UNI-Dome (DOM) |
| 66 Environmental Health and Safety Building | 55b Panther Village 3000 | 61 University Apartments Office (UAP) |
| 65 Facilities Management (PHF) | 64 Power Plant (PPI) | 62 Warehouse '1 (WH1) |
| | 28 President's House | 7 Wellness and Recreation Center (WRC) |
| | 41 Psychology #1 | 23 West Gymnasium (WST) |
| | 50 Redeker Center (RDC) | 33 Wight Hall (WRT) |
| | 16 Richard O. Jacobson Human Performance Center (HPC) | |